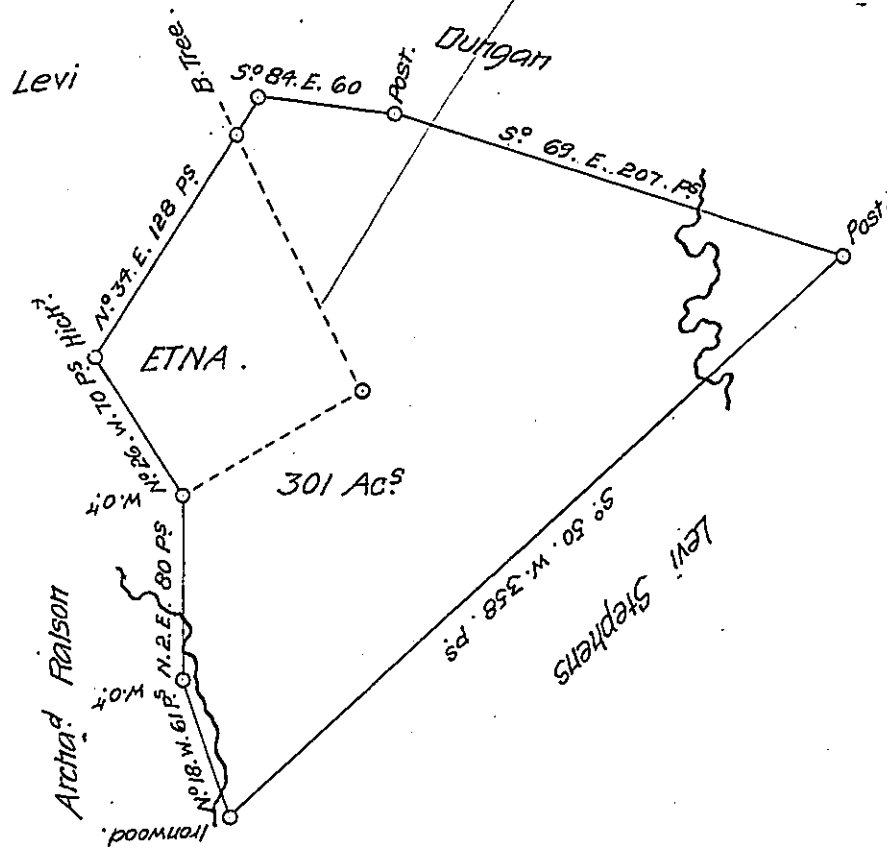


(set out)

HARVET - BEAVER



A Draught of a Survey called "Aetna" situate on the Waters of Kings Creek in Washington County, contain^g 301 Ac^s and the usual Allow^{es} for Roads &c. executed July y^e 6th 1785 in Pursu-
 ance of a Warr^t for 300 Ac^s granted to Jn^o Hurst dated July 1st 1784. Note. the Survey was
 originally executed as it here stands, but Mr. Hurst on his first Return had the Space
 within the dotted Lines left out to save a Dispute, tis now included at his Request

Prestey Nevill. D. sr

Matt^r Fitchie "

Jr^o Lutrens Esq^o S. G.

IN TESTIMONY that the above is a copy of the original remaining on file in
 the Department of Internal Affairs of Pennsylvania, made
 conformably to an Act of Assembly approved the 16th day of
 February, 1833, I have hereunto set my Hand and caused
 the Seal of said Department to be affixed at Harrisburg,
 thisfifteenth..... day ofApril..... 1908 .

Neville Howard
 Secretary of Internal Affairs.